

The ESDC Cyber ETEE Platform

5th CSDDP Conference
Gregor Schaffrath – Training Manager

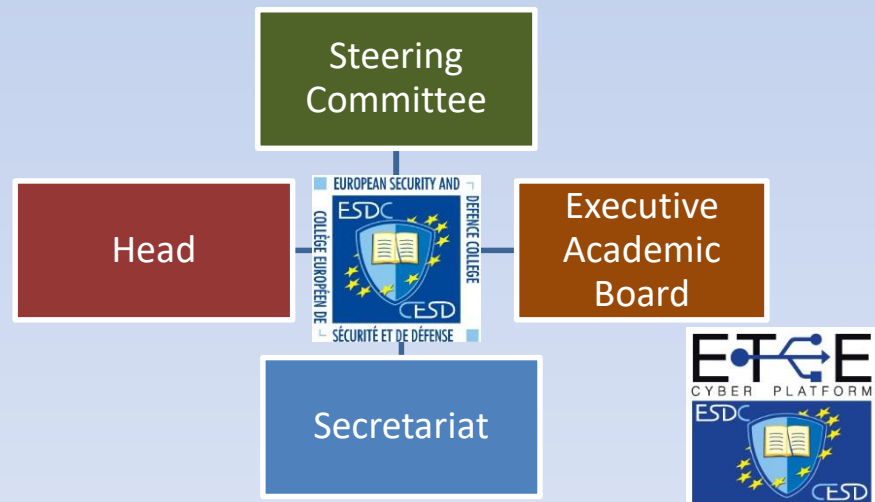
Lisbon, 16 May 2019



CSDDP

What is the ESDC?

- Network College
- Established 2005 based on Council Decisions
- Embedded into EEAS
- Sui-generis organisation
- Legal capacity
- Direct control of the Member States (MS)



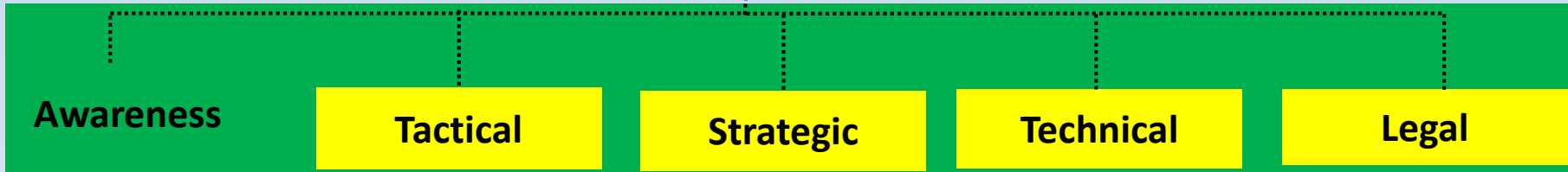
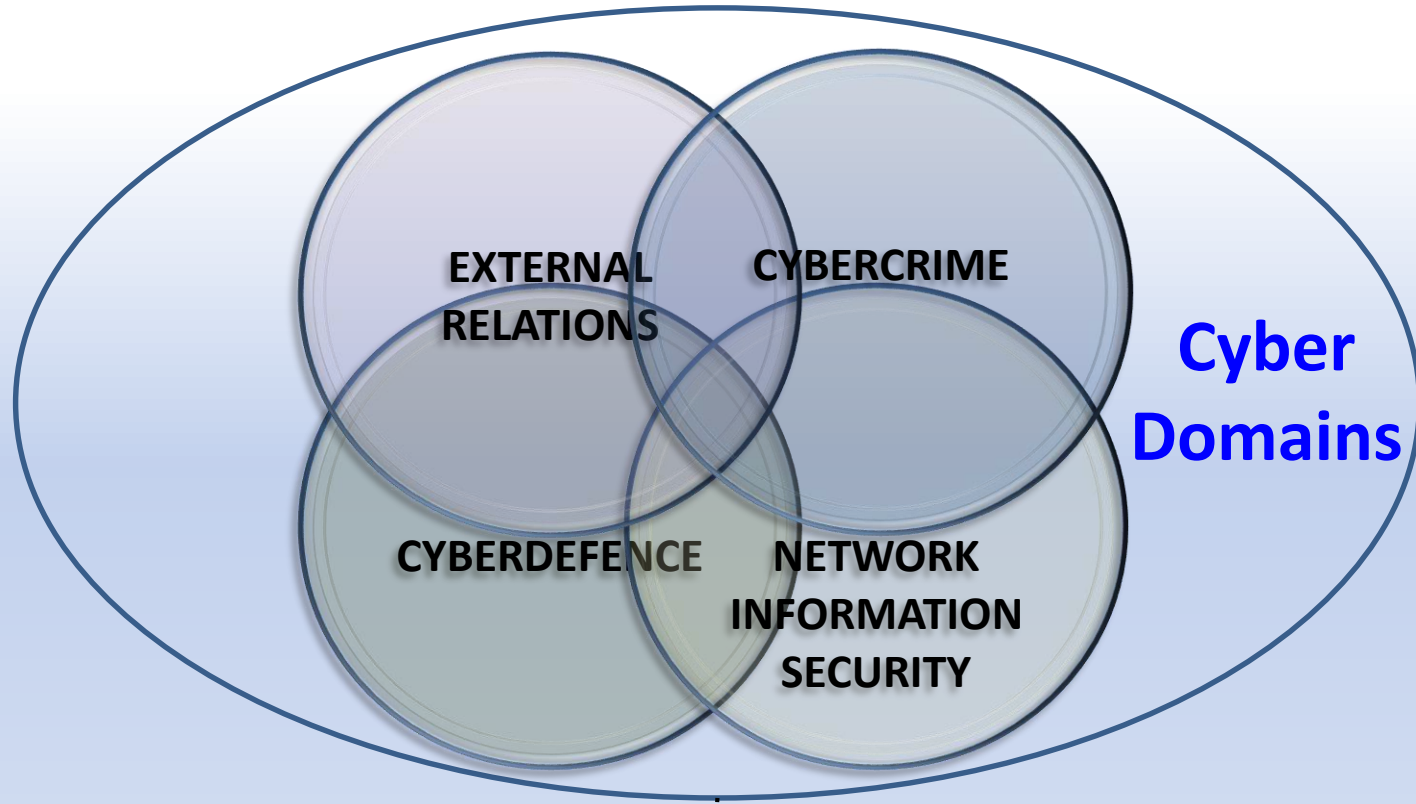
CSDP

Cyber

- Label for anything relating to ICT in a meaningful and relevant way
 - More than securing individual devices or systems
- Pervasiveness and interconnections of ICT
 - No borders (national, organizational, or domains)
- Interoperability is key
 - Need for coordination, harmonization across domains and nations



Cyber ETEE Platform



CSDP

**Thank you
for your attention!**

Questions?



CSDP